

TBS Precision Engineering

founded in 1992

INCORPORATED IN 1995



Customer Locations



March 2025

TBS

Precision Engineering

founded in 1992

founded in 1992

TBS Precision Engineering, founded in **1992**, is located in Penang, Malaysia and specializes in the **precision machining of metal and engineering plastic** components for a wide range of industries: **Medical, Life Science, Instruments, Aerospace, Oil & Gas, Photonics, Semiconductor Front and Back-End (automation) and Food & Beverage (automation).**

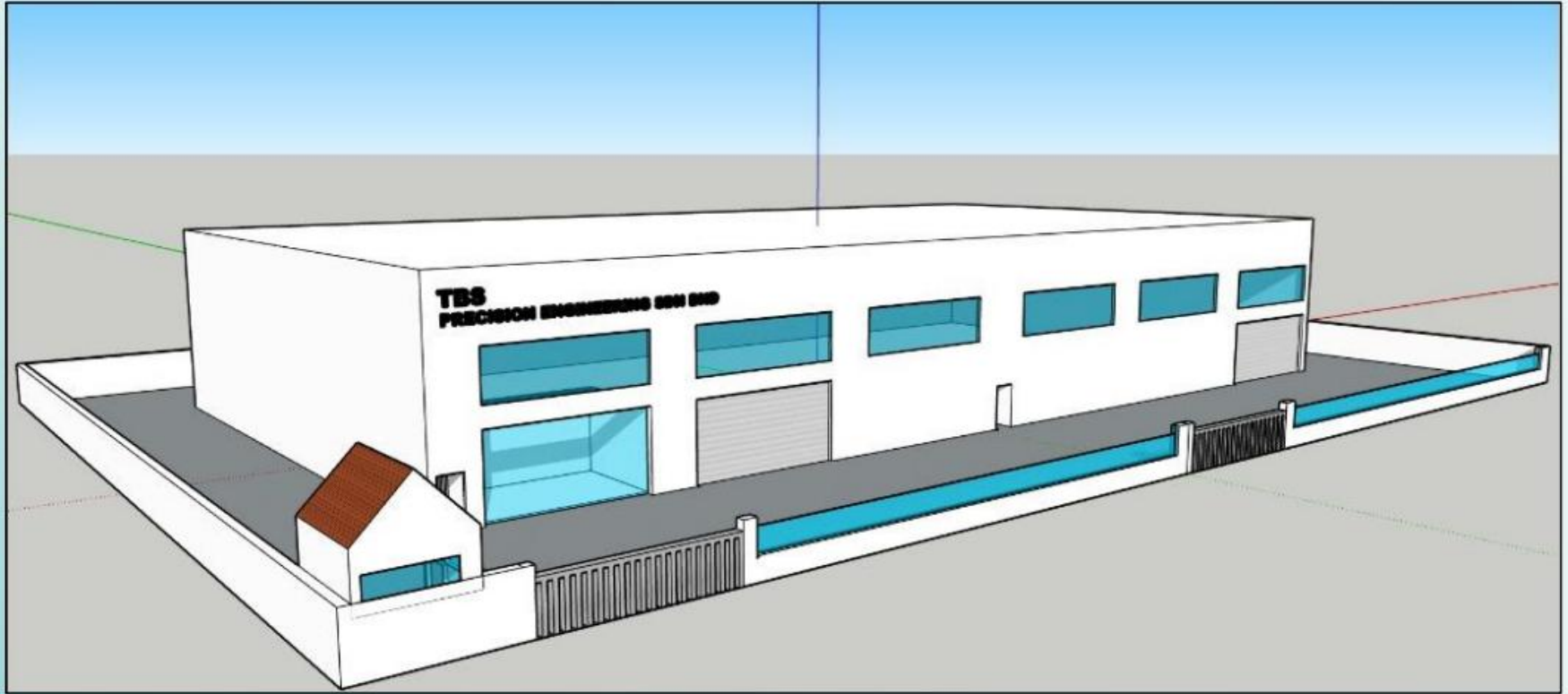
Annual **revenue is USD 2.7 million** operating on a production floor space of **15,000 square feet with a workforce of 60+ employees. Expansion underway to increase floor space to 30,000 square feet over 2024 / 2025.**

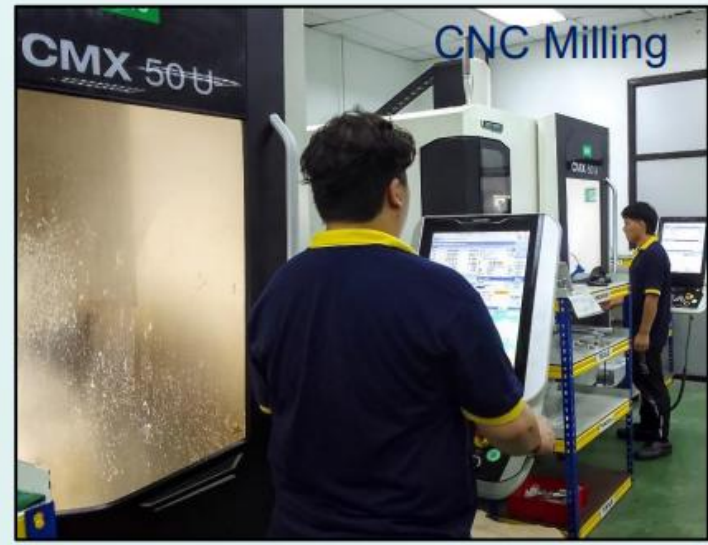
ISO 9001 certified (since 2006), TBS continually upgrades its capacity and capability.

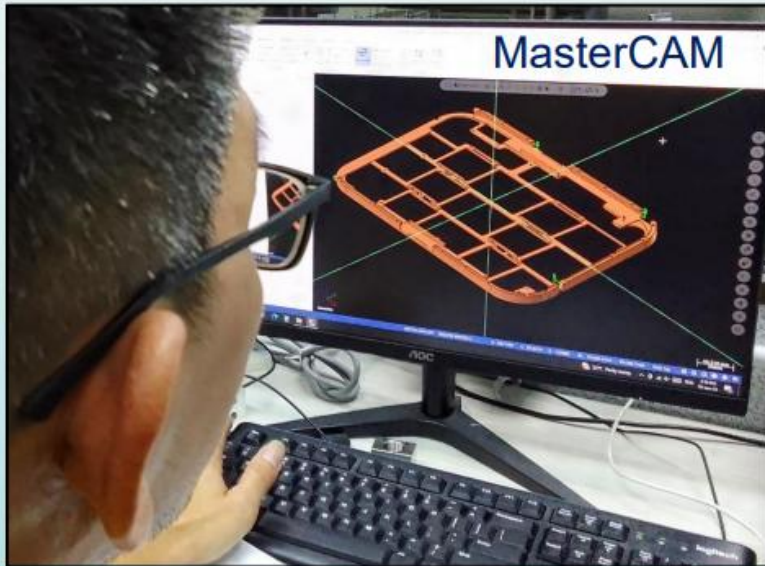
Customer base is split **50/50 between direct overseas exports (Singapore, Thailand, New Zealand, Hong Kong, Japan, India, Ireland, Poland, England, Austria, Norway, Switzerland, Greece, Serbia, Canada and USA) and MNCs based in Malaysia.**



2024/2025 expansion (floor space from 15K sq ft to 30K sq ft)







equipment: CNC

note balance between milling and turning and the number of multi-axis machines

Total of 26 CNC machines, from Turning to Auto-lathes to Milling * denotes =/> 4 axes					
	Brand	Model	Axis	Type	Travel mm (Dia x Length)
1	Nakamura	Tome WT-150	8 *	CNC Turn Mill, Double Turret & Spindle	150 x 450
2	Star	SB 20R	7 *	Auto-Lathe	20 x 150
3	Star	SB20R Type E	7 *	Auto-Lathe	20 x 150
4	Star	SB20R Type E	7 *	Auto-Lathe	20 x 150
5	Mazak	QT-Compact	4 *	CNC Turn-Mill	340 x 525
6	Mazak	QT-Compact	4 *	CNC Turn-Mill	340 x 525
7	Mazak	QTE-200	2	CNC Turning	350 x 520
8	Nakamura	Tome TNC-15	3	CNC Turn-Mill	150 x 220
9	Nakamura	SC 150	3	CNC Turn-Mill	400 x 250
10	Nakamura	SC 200	3	CNC Turn-Mill	300x 260
11	Femco	HJ 28	2	CNC Turning	250 x 600
12	Hyundai	SKT 100	2	CNC Turning	200 x 150
					Travel mm (L x W x H)
1	DMG	CMX 50U	3+2 *	CNC Milling	500 x 450 x 400
2	DMG	CMX 50U	3+2 *	CNC Milling	500 x 450 x 400
3	Enshu	ES 401	4 + 1 *	CNC Milling	500 x 350 x 350
4	Pratic	PYB-4500	3	CNC Milling	4500 x 600 x 500
5	Dahlih	MCV-860	4+1 *	CNC Milling	800 x 600 x 600
6	Enshu	WE 30V	4+1 *	CNC Milling	500 x 350 x 350
7	Mazak	VCN-430B	3	CNC Milling	430 x 510 x 760
8	Mazak	Variaxis J-500	4+1 *	CNC Milling	500 x 450 x 400
9	Dahlih	MCV-1200	3	CNC Milling	1200 z 500 z 600
10	Mori Seiki	Dura Center	3	CNC Milling	800 x 450 x 500
11	Feeler	VMX-E	3	CNC Milling	760 x 420 x 510
12	Feeler	VMX-E	3	CNC Milling	760 x 420 x 510
13	Feeler	QM-22A	3	CNC Milling	600 x 400 x 350
14	Feeler	VMX-1650	3	CNC Milling	1650 x 800 x 800

equipment: CONVENTIONAL

Conventional machines					
	Brand	Model	Qty	Type	Travel mm (Dia x Length)
1	Cheng Long	CH-330A	1	Automatic Band Saw	330 mm diamter
2	YAM	-	3	Conventional Lathe	300 x 1000
3	Acu Rite	-	3	Conventional Milling Machine	300 x 600 x 300
4	Quip Top	-	2	Conventinal Surface Grinding	350 x 600
5	ZMC	-	1	Gear Hobbing	-
6	Paragon	RC-18B	1	Center-less Grinding	20 x 2000
7	SSG	-	1	Wire EDM	250 x 300
8	SSG	HB 400	1	Wire EDM	300 x 400
9	ToBest	TB-50ST	1	Thread Roller	-
10	Siemens	-	1	CAM	-
11	MasterCam	-	1	CAM	-

equipment: METROLOGY

note under evaluation, a larger, 2 meter bed CMM

Category	Maker	Model	Travel (mm)	Resolution (μm)	Units
CMM	Brown & Sharpe	Global Performance	500 x 700 x 500	1	1
Profile Projection system	Micro-Vu	-	120 x 450	1	1
DynaScope Measuring System	Vision	-	120 x 120	1	1
Roughness Tester	Mitutoyo	SJ-201	-	-	1
Linear Height	Mitutoyo	-		1	1
3 Point Mic (Set)	Mitutoyo	-	∅ 20~100	2	1

A wide range of handheld measuring tools: Calipers, Micrometers (external and internal) , Pin Gages, Thread Plug Gages, Thread and Ring Gages and Block Gages.

2024/2025 expansion (in-coming machines)

Arrived



Feeler CNC 3 – Axis
Arrived July 2024
1650 x 800 x 800 mm



Feeler VMX 760
Arrival March 2025
760 x 420 x 510 mm
2 units

VARIAXIS j-500 **Arrived**



Mazak CNC 5 – Axis
Arrival Feb 2025



DMC CNC 5-Axis
Arrival March 2025



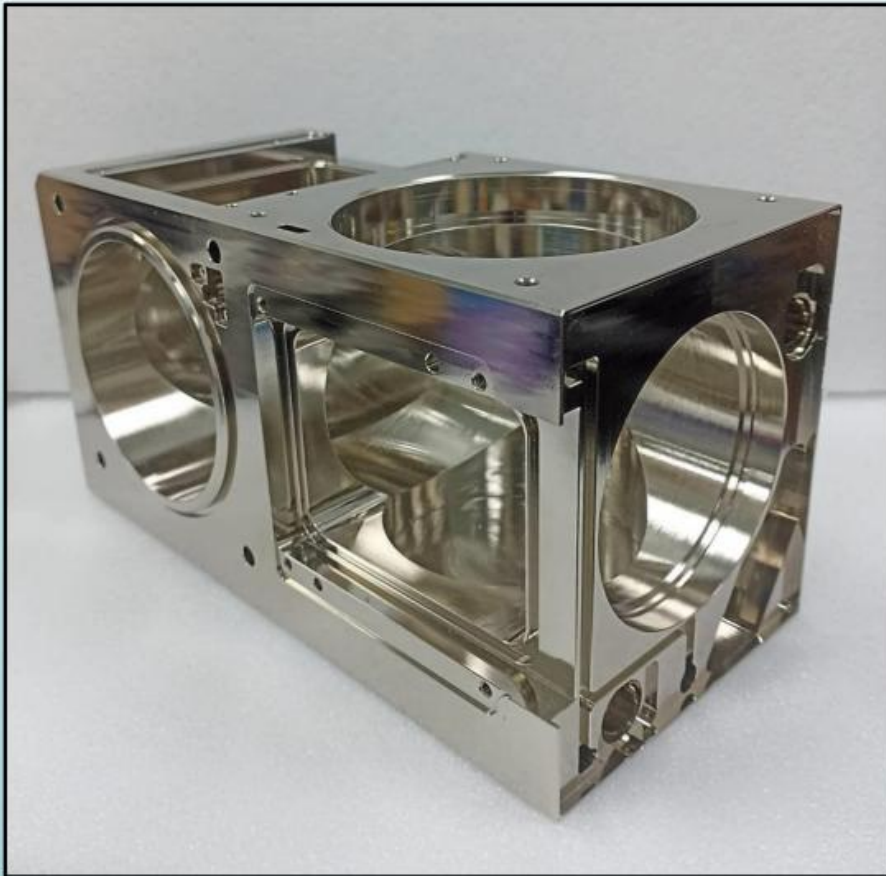
Industry: Photonics
Material: Gold plated brass



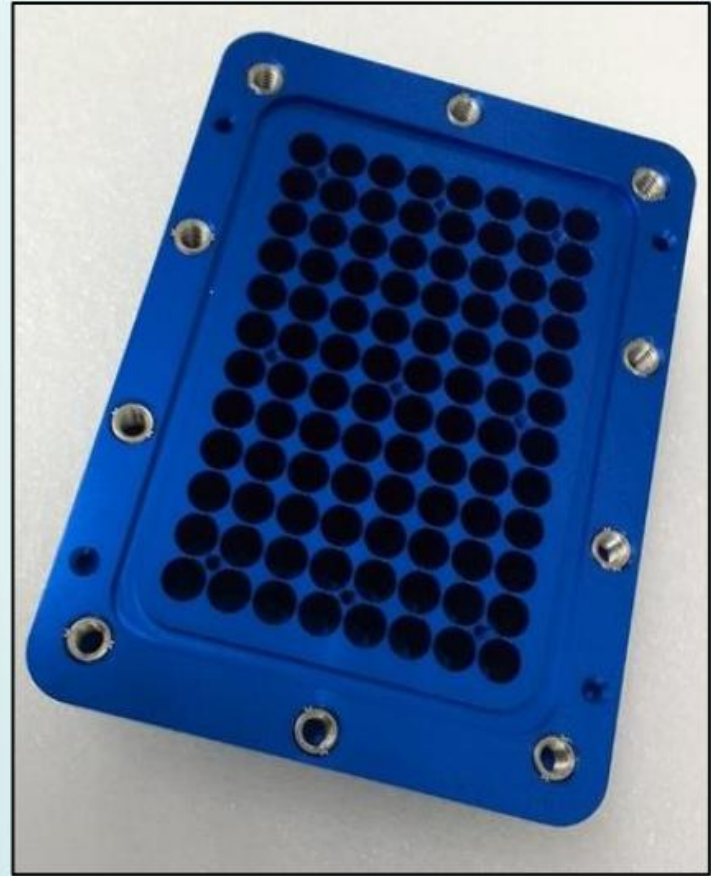
Industry: Gas monitoring & measurement
Material: Aluminum

Core competency is in the precision machining of medium to high mix, low to medium volume, complex parts (4 to 8 axis).





Use / Industry: Mounting Block, Photonics
Material: Nickel plated aluminum



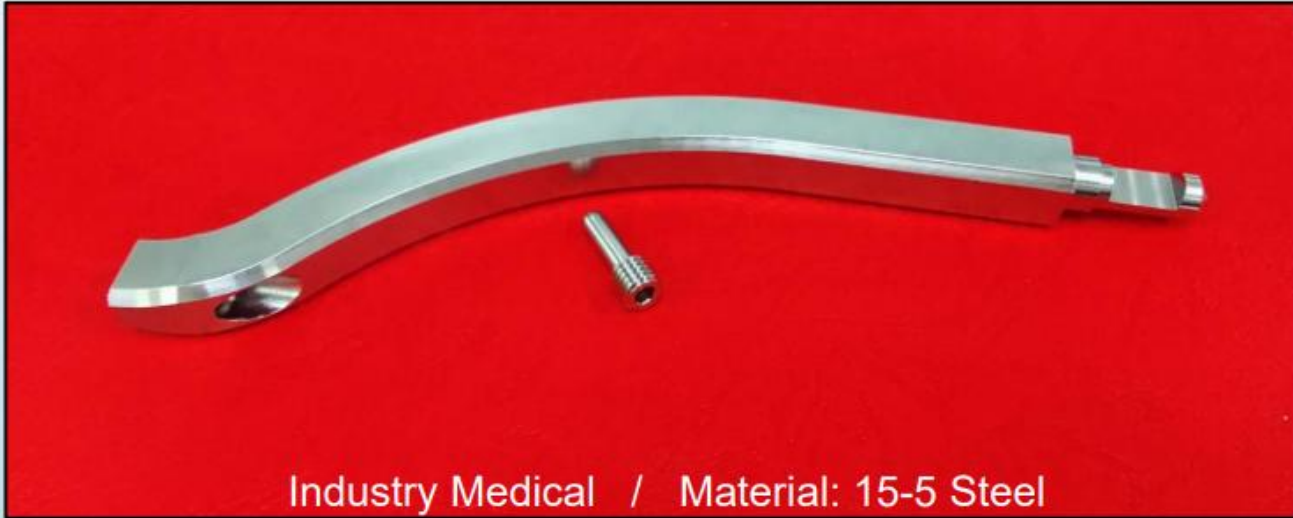
Industry: Life Science
Material: Blue anodized aluminum with
stainless steel threaded inserts.



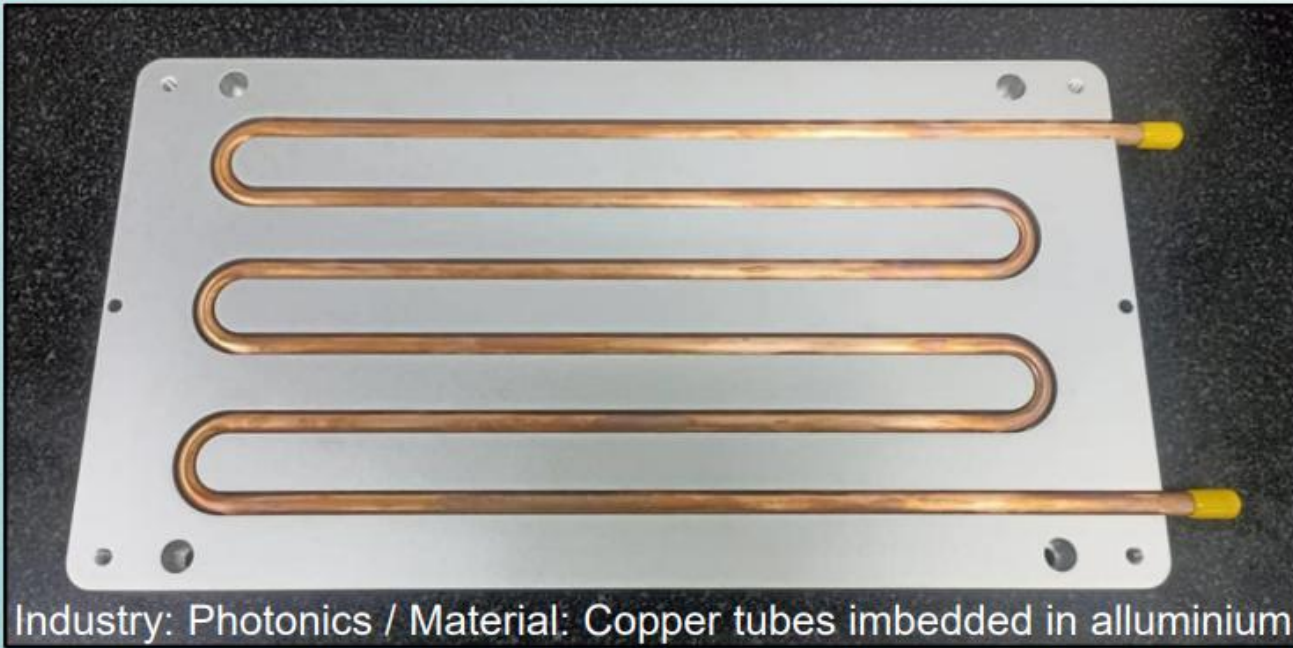
Industry Medical
Material: Steel



Industry: Instruments
Material: Aluminum



Industry Medical / Material: 15-5 Steel



Industry: Photonics / Material: Copper tubes imbedded in alluminium



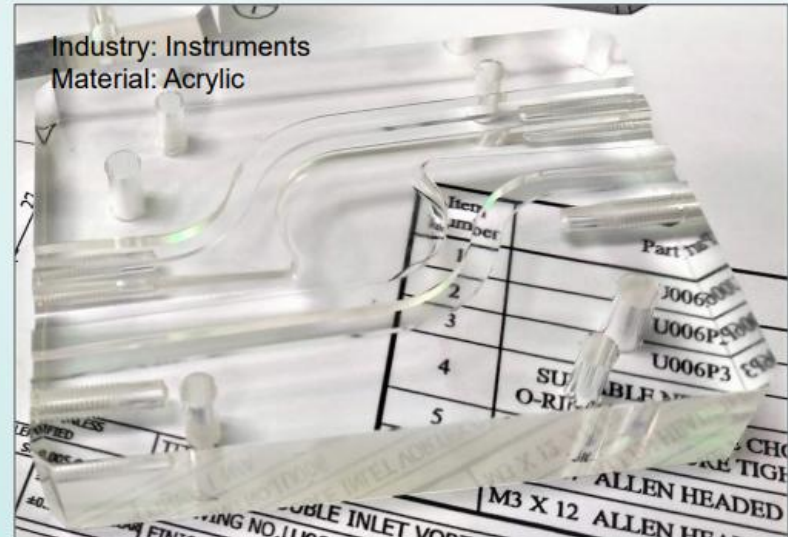
Industry: Oil and Gas
Material: SS304



Industry: Life Science
Material: Peek



Industry: Medical
Material: Aluminum body with
Stainless Steel pins



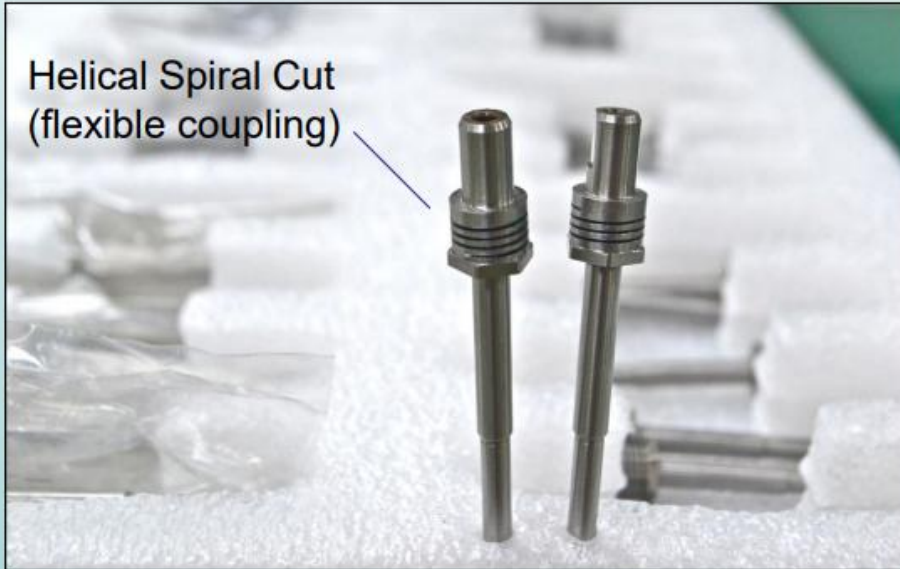
Industry: Instruments
Material: Acrylic

Industry: Oil & Gas
Material: Steel



Industry: Oil & Gas
Material: 440
Hardened Steel



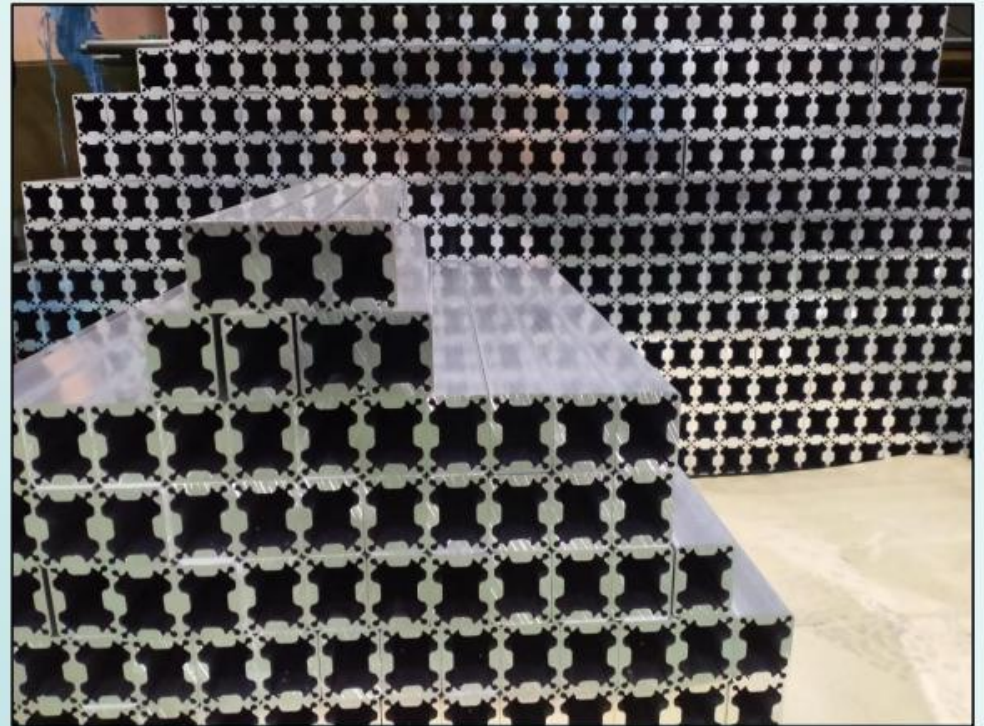


Helical Spiral Cut
(flexible coupling)

Industry: Aerospace, radar gimbal coupling
Material: 17-4



Industry: Medical
Material: 17-4



Machined aluminium extrusions





Mechanical Assembly



CNC Turning Capabilities

Diameter (mm)	(+/- μm)	Material
0.5 – 10	5	Copper Based Material : BeCu, Brass, etc Nickel Based Material : Inconel 600~700, etc Stainless Steel : 300 series, 400 series, 17-4, etc Aluminum : 2000 series to 7000 series Ferrous Material : Tool steel, AISI 1020, 1018, 1010, 12L14, etc Engineering Plastics: Delrin, POM, Peek, Nylon, Teflon, etc Others : Titanium, etc
10 – 50	5	
50 – 100	5	
100 – 300	10	

CNC Milling Capabilities

GD & T	(+/- μm)	Material
	20	Copper Based Material : BeCu, Brass, OFC Cu, etc Nickel Based Material : Inconel 600~700, etc Stainless Steel : 300 series, 400 series, 17-4, etc Aluminum : 2000 series to 7000 series Ferrous Material : Tool steel, AISI 1020, 1018, 1010, 12L14, etc Engineering Plastics: Delrin, POM, Peek, Nylon, Teflon, etc Others : Titanium, etc
	20	
	5	
	10	

TBS Precision Engineering Sdn Bhd

(Company Number 620672-H)

9, Solok Beringin Mk 12
11960, Batu Maung, Penang, Malaysia.
Tel : +604 6262776 Fax : +604 6262508
www.tbsprecision.com

Contacts

Mr. Chan Hock Aun
Business Development Manager
Mobile : +6012 430 6526
Email : hachan@tbsprecision.com

Mr. Tan Boon Hock
Managing Director
Mobile: +6012 483 3669
Email: hock@tbsprecision.com

